

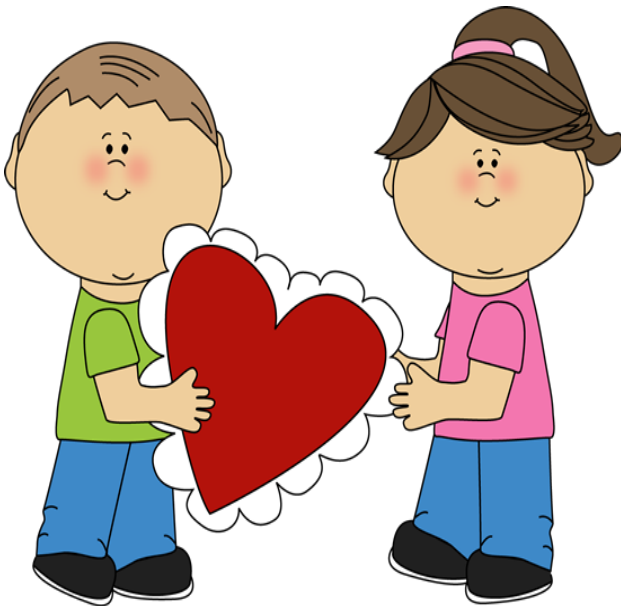
Valentines Day

Class Party

Our Class Celebration Will be on:

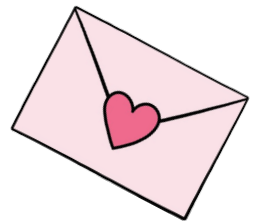
February 12th

Students are allowed to bring in Valentine's for their friends. Please make sure that if they decide to bring in Valentine's, that they bring one for every student!



We have **19** Students in our Class!

I ask that you do not address the valentines to specific students. Simply write who the Valentine is from. This makes the passing out process a lot easier! Thank you for making this a fun activity!



Please have these sent in by February 10th, as well as a shoebox that the children can collect their valentines in! We will decorate these shoeboxes!



Miss Krebs